



MONTHLY MEMBERSHIP PROGRESS REPORT

District 2 T1

Results as of: 05/31/2019

GMT: GREGORY GILLIAM

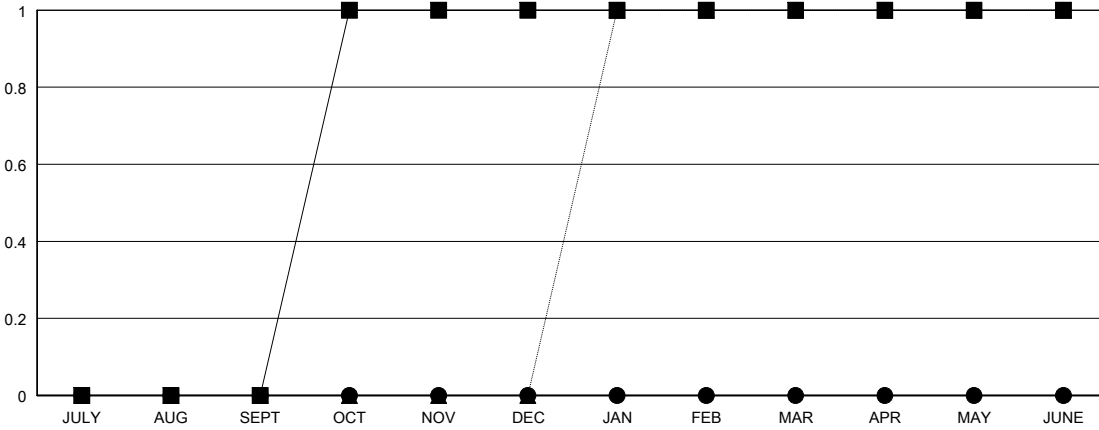
LOCATION TEXAS

GMT CA

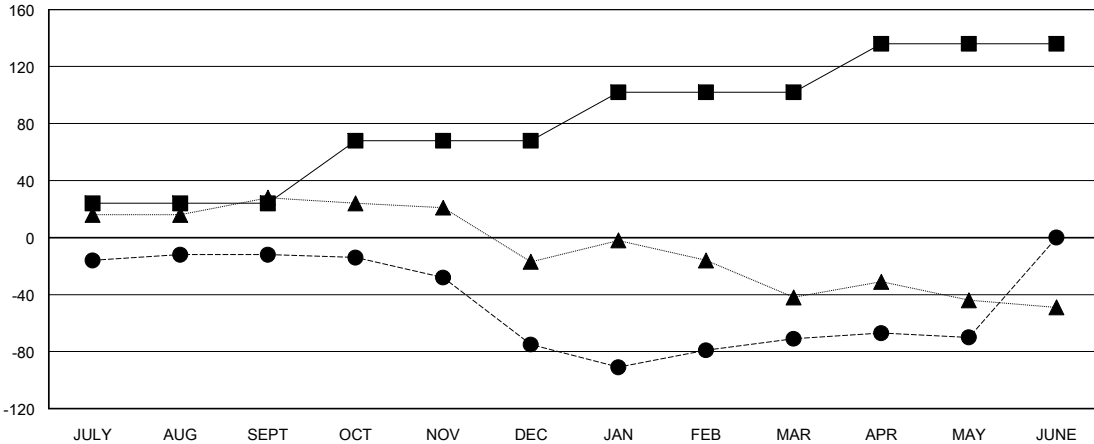
Clubs			
RESULTS FOR 2018-2019			
QUARTER	NEW CLUB GOAL	NEW CLUBS	DROPPED CLUBS
JULY/AUG/SEPT	0	0	1
OCT/NOV/DEC	1	0	2
JAN/FEB/MAR	0	0	0
APR/MAY/JUNE	0	0	0

Members			
RESULTS FOR 2018-2019			
QUARTER	MEMBER GROWTH NET GOAL	MEMBER GROWTH ACTUAL	DROPPED MEMBERS ACTUAL (including transfers)
JULY/AUG/SEPT	24	42	50
OCT/NOV/DEC	44	36	95
JAN/FEB/MAR	34	68	37
APR/MAY/JUNE	34	16	15

GOALS AND ACTUAL NEW CLUBS CUMULATIVE



GOALS AND ACTUAL MEMBERS CUMULATIVE



DROPPED CLUBS: 3

23 CLUBS OF 38 ADDED 1 OR MORE NEW MEMBERS

GENDER DISTRIBUTION	
MALE	837 (69.69%)
FEMALE	364 (30.31%)
Women Percentage Fiscal Year Goal: 40%	

DROPPED MEMBERS	
DECEASED	14
CLUB CANCELLED	32
OTHER	151
TOTAL	197

[CLICK HERE FOR CUMULATIVE MEMBERSHIP DATA](#)

TOTAL FAMILY UNIT MEMBERS	140
FAMILY MEMBERS PAYING HALF DUES	70